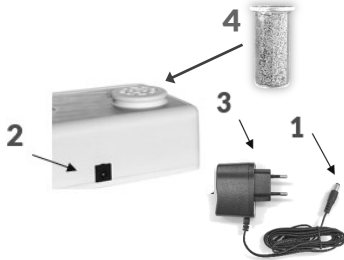


OPERATION



Place the diffuser on a flat surface:

- Insert the power adapter connector **1** into the slot **2**, located at the back of the diffuser
- Insert the plug **3** into the socket and then press the POWER button
- Insert the capsule into the slot inside the diffuser, as shown in the figure **4** with the open side facing upwards.

The supplied KIT includes:

- 1 pediatric mask
- 1 adult mask
- 1 connection tube



THE DISPLAY GOES INTO **STAND-BY MODE**, AFTER ABOUT 30 MINUTES OF INACTIVITY, IN ORDER NOT TO DISTURB NIGHT REST. TO **REDISPLAY** THE SCREEN, SIMPLY PRESS ONE OF THE BUTTONS LOCATED TO THE RIGHT OF THE DISPLAY SCREEN.

ROOM PROGRAM

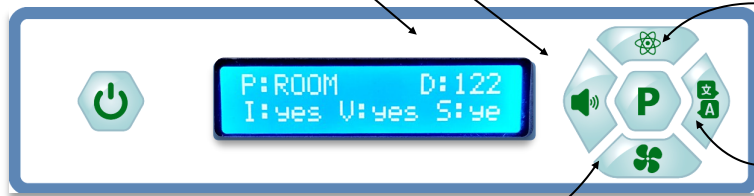
IT IS POSSIBLE TO ACTIVATE / DEACTIVATE THE FOLLOWING FUNCTIONS ONLY IN ROOM PROGRAM

D DURATION

Capsule consumption
(122 hours countdown)

S SOUND

The deactivation of the sound allows to exclude the warning beep of the end of the capsule operating cycle



I IONIZER

The Ionizer enhances the sanitizing properties of the propolis. Disabling allows you to use the diffuser in presence of children under the age of 3 years.

LANGUAGE

The device is customizable in 5 different languages (Italian, English, German, French and Spanish).

V VENTILATOR

The diffuser provides coverage up to 30 sqm. Fan activation can double the field of action in order to saturate environments up to 60 sqm.

IN ORDER TO OBTAIN THE BEST RESULTS IN PREVENTING RESPIRATORY DISEASES AND ENVIRONMENTAL SANITIZATION, KONTAK RECOMMENDS THE USE OF THE DIFFUSER 24 HOURS / 7 DAYS A WEEK.

AEROSOL MASK PROGRAM

First set the ROOM program, by pressing the 'P' button on the device, wait for the time necessary for the propolis to reach melting temperature (about 10 minutes) and then select the AEROSOL program.

Insert the connecting tube into the housing located in the upper part of the diffuser and adjust the mask on the face.

It is recommended to start slowly, with short sessions and gradually build up to 15 minutes.

In AEROSOL mode the Ionizer is always deactivated and the Fan is always active to guarantee an adequate supply of air.

CAPSULE MANAGEMENT

Each capsule is for single use and lasts approximately 122 hours. The END of the cycle of the capsule is indicated by an acoustic signal. Never replace the capsule before.

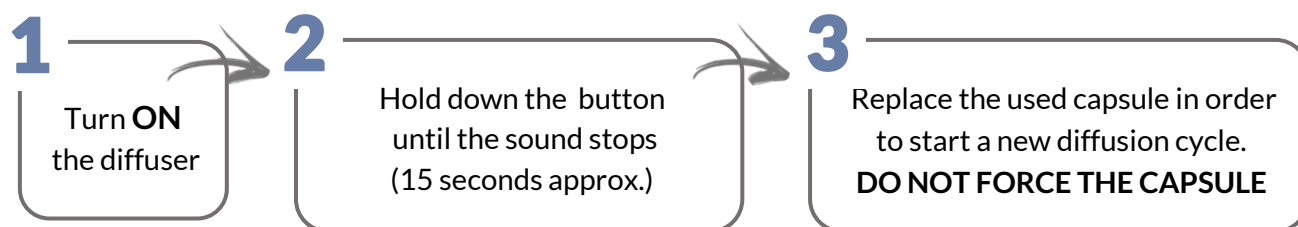
At the end of the cycle, a residue of depleted propolis will be visible inside the glass capsule, now devoid of active ingredients

PROPOLAIR diffusers use only original KONTAK capsules. The processing of propolis and the subsequent filling of glass capsules are galenic preparations and require dedicated and specialized machinery. The use of NOT original capsules may cause a diffuser malfunction, compromising functionality. The capsules are not refillable.

PLEASE NOTE: do not move the device while in use, as the propolis capsule can be hot and the propolis might melt during the sublimation process. When replacing the capsule, wait until the device and exhausted capsule has cooled down

IT IS NECESSARY TO RESET THE OPERATING SYSTEM AT EVERY CAPSULE CHANGE.

PLEASE PERFORM THE FOLLOWING PROCEDURE:



TECNICAL DATA

PROPOLAIR SMART
PATENTED SYSTEM



VOLTAGE 100-240 V
FREQUENCY 50/60 HZ
RATED POWER 5VDC 1A



COVERAGE UP TO:

60
SQM



THE DEVICE IS NOT DOMESTIC WASTE. DISPOSE OF IN ACCORDANCE WITH LOCAL REGULATIONS.
THE USER IS RESPONSIBLE FOR DISPOSING OF THE APPLIANCE.

CAUTION

- Do not use the device outdoors. Keep it away from heat, direct sunlight, humidity. Do not use the device with wet hands.
- To clean the unit, it is necessary to disconnect the electricity, without pulling the cable, and use a damp cloth.
- Check the device and the power cord regularly for possible damage. Do not use the appliance if it has fallen to the ground or into the water, and if it is damaged. In the above cases, contact the distributor or an authorized service.
- Keep the device out of reach of children.
- Do not insert anything other than the KONTAK propolis capsules in the opening of the device.
- Risk of burns! Do not touch the hot parts. To replace the capsule, wait until the device has cooled down.

WARRANTY

The warranty period is 12 months from date of purchase. The guarantee can be applied only upon presentation of the document certifying the purchase. At the time of purchase, the seller guarantees that the device functions correctly if it is managed according to the instructions for use.

Warranty covers replacement or free repair of defective parts as confirmed by the dealer or by a third party appointed by the dealer.

Warranty is not extended to parts subject to wear or damage to delicate parts (switch, wire, etc.).

Warranty becomes null and void if the diffuser is not properly used according to the instructions of the manufacturer; if it is modified, repaired or dismantled, even partially, outside the laboratories of seller or belonging to the commercial organization of the manufacturer and if non-original propolis capsules are used.



Dr. Klinghardt's
First Choice

www.kiscience.com